

HTW Chur
Hochschule für Technik und Wirtschaft

Fachhochschule Ostschweiz
University of Applied Sciences



Claroline and the authentication system Shibboleth



Shibboleth[®]



Contents

Introduction

What is Shibboleth and how does it work?

The Authentication and Authorization Infrastructure (AAI) of Switch

Claroline and Shibboleth

Further information

Introduction

The University of Applied Sciences HTW Chur (Switzerland)

Facts and Figures about Claroline @ HTW Chur

Shibbolizing Claroline

What is Shibboleth?

Internet2 middleware project

Open Source

Federated administration

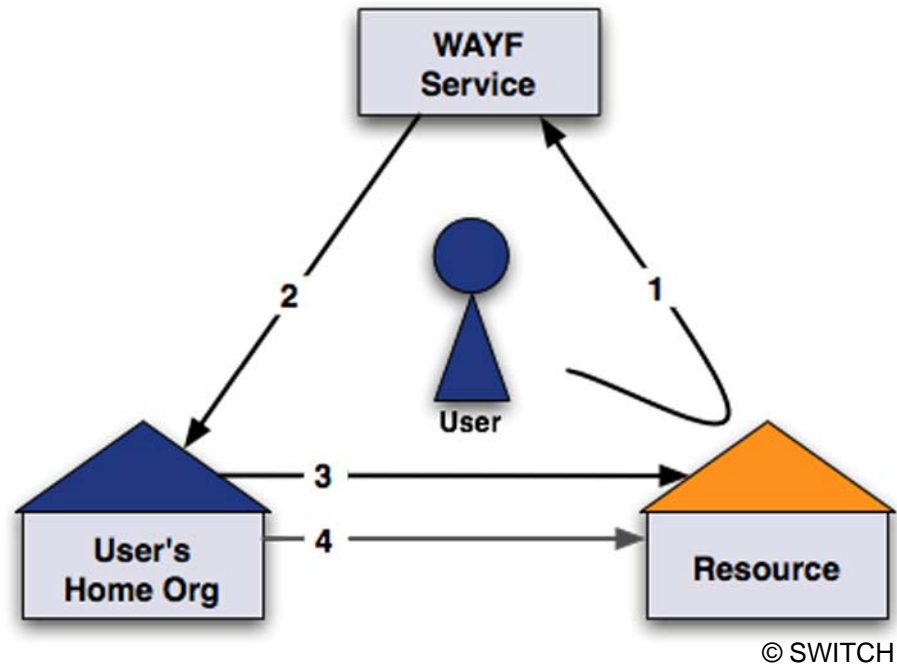
Single Sign-on

How does Shibboleth work?

Web resource

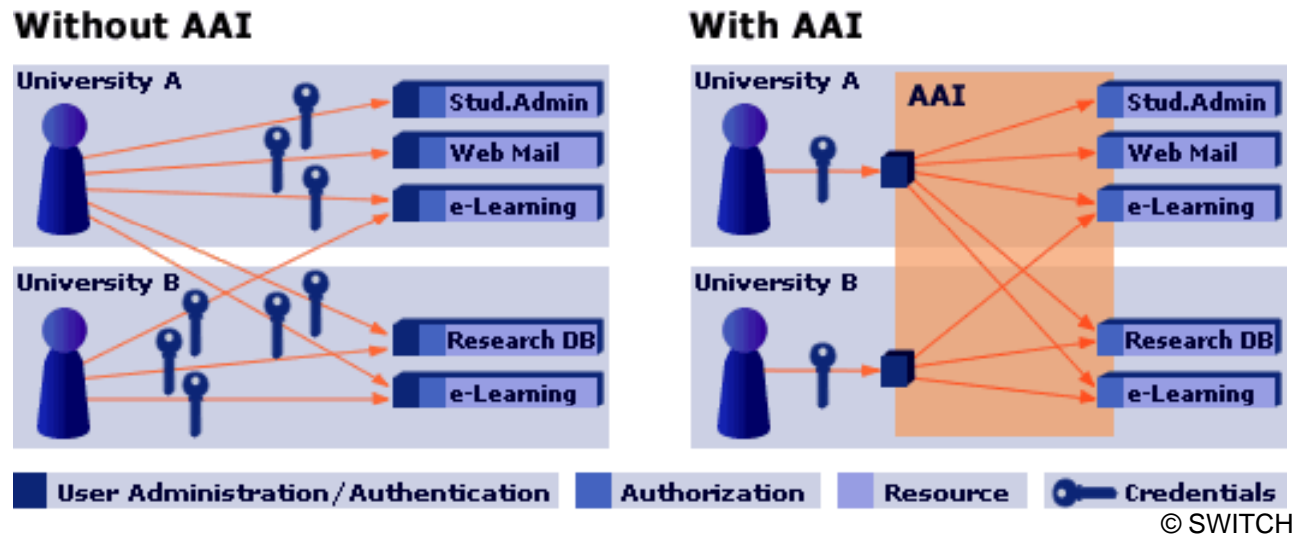
“Where Are You From” server

Identity Provider



The Authentication and Authorization Infrastructure (AAI) of Switch

SWITCH: The Swiss Education & Research Network
Authentication and Authorization Infrastructure (AAI)



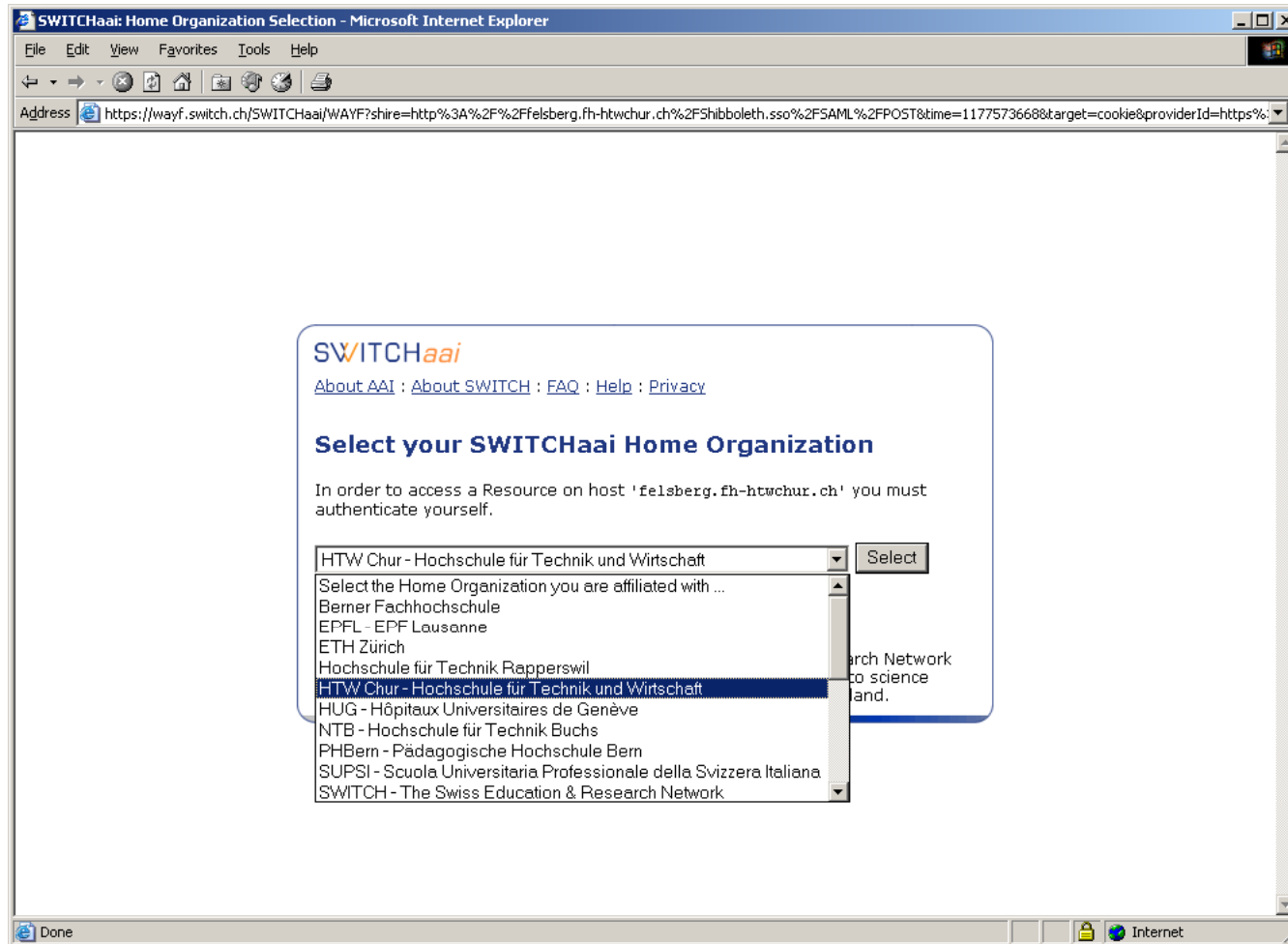
Scenario

Already shibbolized resources

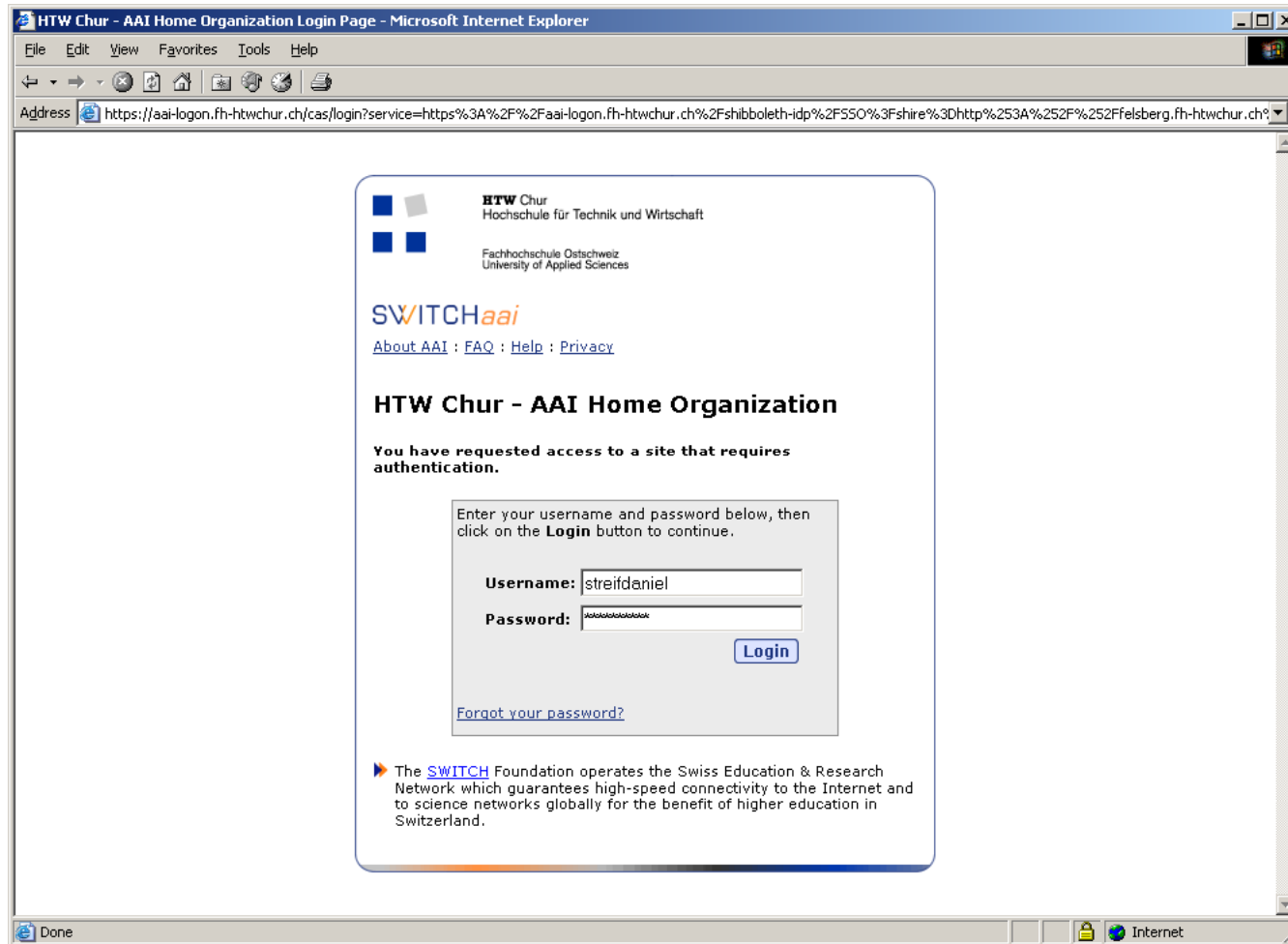
Claroline and Shibboleth



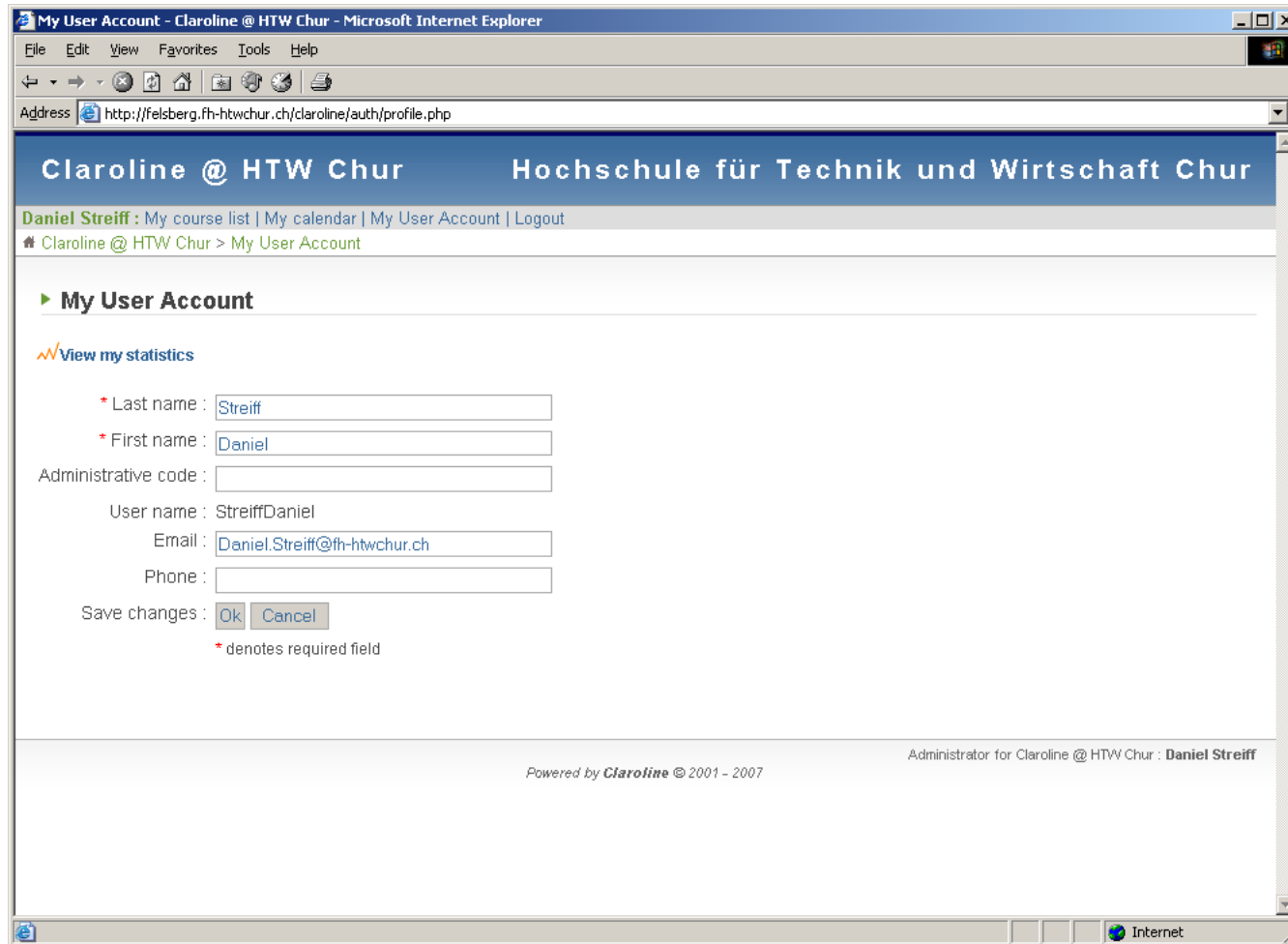
Claroline and Shibboleth - WAYF



Claroline and Shibboleth - IDP



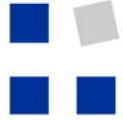
Claroline and Shibboleth



Further information

<http://shibboleth.internet2.edu/>

<http://www.switch.ch/aai/>



HTW Chur
Hochschule für Technik und Wirtschaft

Fachhochschule Ostschweiz
University of Applied Sciences



Thank you for your attention.